

# CERTIFICATE OF LOCATION OF GOVERNMENT CORNER

WEST 1/4 Corner of Section 17, Township 106, Range 43, 5TH P.M.

STATE OF MINNESOTA, County of MURRAY

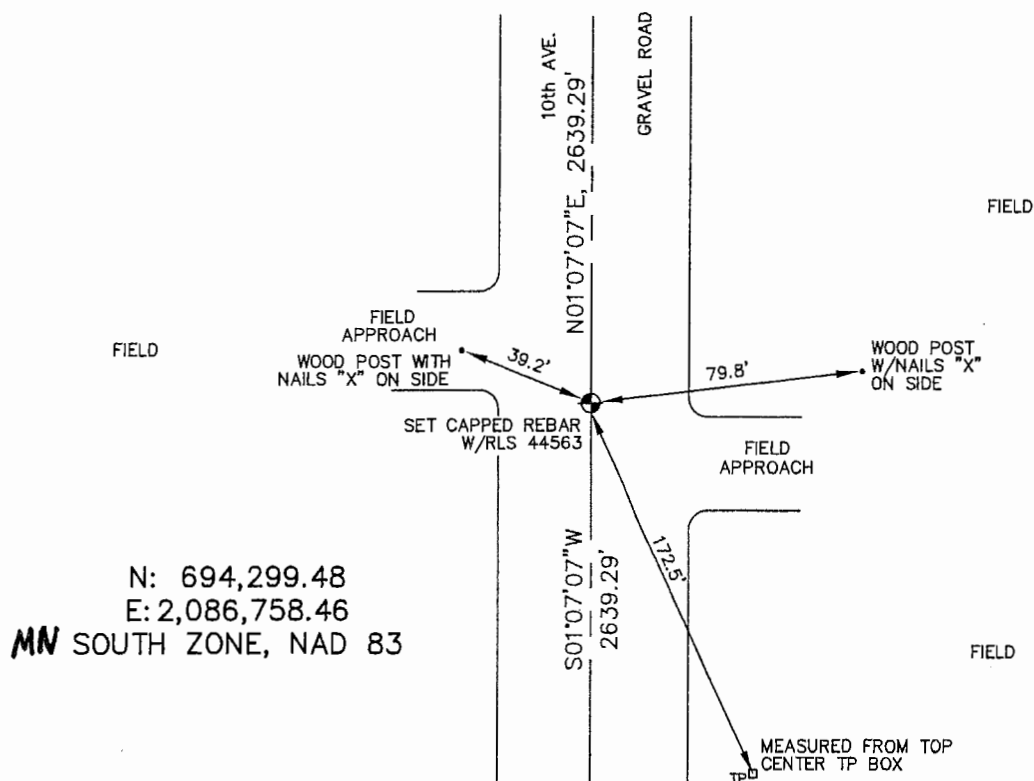
At the corner location shown on the sketch :

☐ On \_\_\_\_\_ found \_\_\_\_\_

☐ left monument as found, ☐ lowered monument, ☐ removed monument (explain)

☒ On 3/23/2006 set 5/8" REBAR w/ CAP: RLS 44563  
IN GRAVEL ROAD.

Sketch of reference ties



Statement of evidence relative to this corner location is on back page

I hereby certify that this document and the data contained herein was prepared by me or under my direct supervision.

James V. Johnson 5/13/06  
Signature Date

Registration No. 44563

☒ Land Surveyor, ☐ Professional Engineer

☐ County Surveyor, ☐ County Engineer

## OFFICE OF THE COUNTY RECORDER

County of \_\_\_\_\_

**SEP 28 2006**

I hereby certify that this document was filed in the Co. Records office at \_\_\_\_\_ M. on the day of \_\_\_\_\_ A.D., 20

County Recorder James V. Johnson  
By \_\_\_\_\_, Deputy

DOCUMENT NO. \_\_\_\_\_

STATEMENT OF EVIDENCE:

WEST 1/4 CORNER, SECTION 17, T. 106 N., R. 43 W.,  
MURRAY COUNTY, MINNESOTA

1866 J.W. BSHOP, U.S. DEPUTY SURVEYOR, MONUMENTED CORNER.

? DATE MURRAY CO. HIGHWAY DEPT., FOUND A STONE AT CORNER;  
PLACED A 2nd STONE ON TOP OF ORIGINAL, FOUND STONE.  
LOCATED ON LINE WITH FENCE GOING WEST & FENCE LINE EAST.  
TIES: E-32.2' ON LINE, TACK IN TELEPHONE POLE,

3/23/2006 ULTEIG ENGINEERS, INC., SURBEY CREW, BRIAN PAYNE PARTY CHIEF  
FOUND NOTHING. SET 5/8" REBAR, WITH CAP: RLS 44563 IN GRAVEL.  
TIES: NW-39.2' TO NAILED "X" ON NORTH SIDE OF WOOD POST;  
NE-79.8' TO NAILED "X" ON NORTH SIDE OF WOOD POST;  
SE-172.5' TO TOP, CENTER OF TELEPHONE PEDESTAL;  
N-2639.29' TO NW CORNER, SECTION 17;  
S-2639.29' TO SW CORNER, SECTION 17.